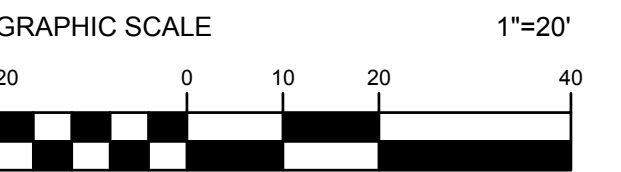


## KEY PLAN

SCALE



## REVISIONS

[illegible]

DRAWN BY \_\_\_\_\_ NPR

APPROVED BY \_\_\_\_\_ SRH

CHECKED BY \_\_\_\_\_

DATE 9/28/18

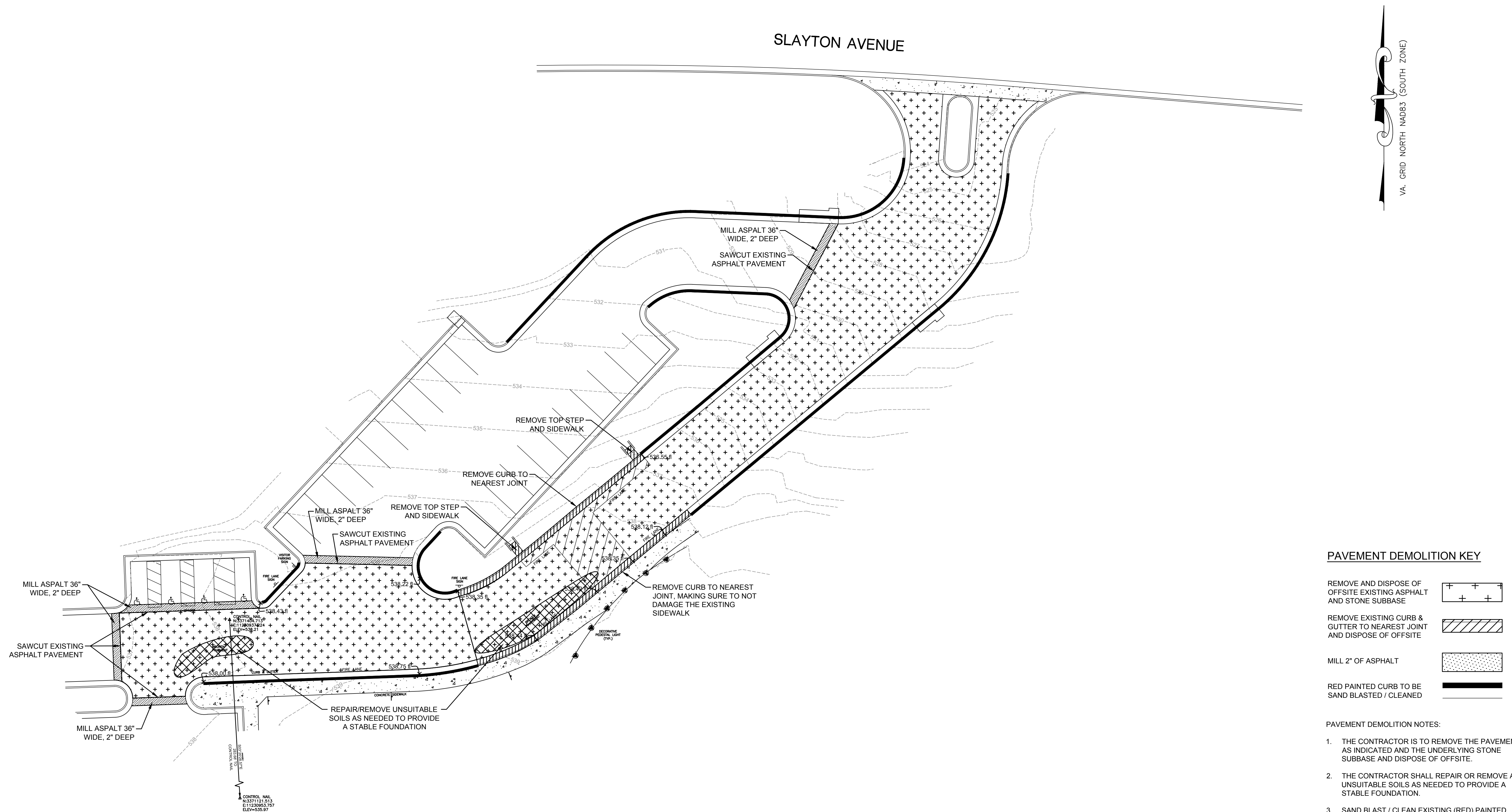
---

TITLE \_\_\_\_\_

# DEMOLITION PLAN

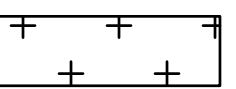
PROJECT NO.	50105948
-------------	----------

# C1.01

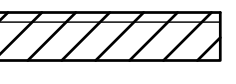


### PAVEMENT DEMOLITION KEY

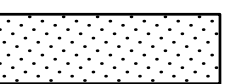
REMOVE AND DISPOSE OF  
OFFSITE EXISTING ASPHALT  
AND STONE SUBBASE



REMOVE EXISTING CURB &  
GUTTER TO NEAREST JOINT  
AND DISPOSE OF OFFSITE



MILL 2" OF ASPHALT



RED PAINTED CURB TO BE  
SAND BLASTED / CLEANED



## PAVEMENT DEMOLITION NOTES:

1. THE CONTRACTOR IS TO REMOVE THE PAVEMENT AS INDICATED AND THE UNDERLYING STONE SUBBASE AND DISPOSE OF OFFSITE.
2. THE CONTRACTOR SHALL REPAIR OR REMOVE ANY UNSUITABLE SOILS AS NEEDED TO PROVIDE A STABLE FOUNDATION.
3. SAND BLAST / CLEAN EXISTING (RED) PAINTED CURB IN PREPARATION FOR FRESH PAINT AS SHOWN ON PLANS.





## Construction Drawings

SHEET NO. 4 OF 4